



KANSAS WISE
WOMEN IN STATE EMPLOYMENT

Kansas WISE May Newsletter



"Be the woman who fixes another woman's crown without telling the world it was crooked."

AMY MORIN

With the legislature adjourned for the year (there will be interim committee meetings) and the weather getting nicer, it's time to think about vacation! Whether you're looking for weekend staycations or weeklong getaways, Kansas has something for everyone - including beaches! Visit TravelKS.com for family friendly ideas, trips for adults, and solo adventures. More ideas are below in our highlight of National Travel and Tourism Week.



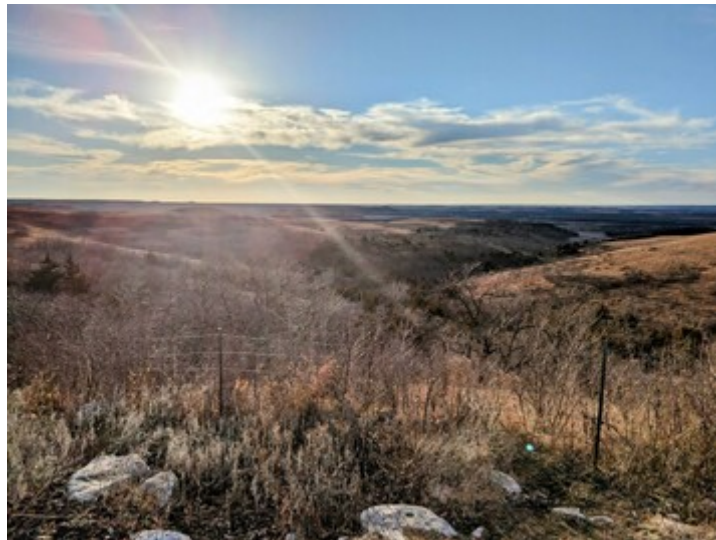
May Celebrates Women Across Communities

May is a month of celebrations for several communities: Asian American Pacific Islanders (AAPI), Jewish Americans, and Older Americans.

Kansas WISE is excited to highlight women within these communities making their mark locally and across the world.

Virtual Events, Resources, and Articles

- **[Michelle Yeoh](#), Actor:** In 2023, Michelle won the Oscar for leading actress when she won for her role in Everything Everywhere All At Once. Her win makes her the first Asian woman to win the award in its 95-year history. Watch her acceptance speech [here](#). Read about other trailblazing AAPI women making waves in Hollywood [here](#).
- **Jewish Women of Valor:** *Women of Valor* recognizes and highlights the lives and accomplishments of sixteen trailblazing Jewish women, each of whom had the courage and conviction to overcome the social, cultural, and religious barriers she faced in creating a more just and equitable world. Read about these trailblazing women [here](#).
- **Older American Month:** Celebrating this year's theme of "Aging Unbound," read about Forbes 50 over 50 list of women making an impact in their communities and across the world. From the President of the American Bar Association to the President of Spelman College, they show that success knows no age limit. Nominations are open for 2023 candidates, and you can read about the 2022 winners [here](#).



National Travel and Tourism Week May 7-13

National Travel and Tourism Week (NTTW) was [established in 1983](#). Over its 40 years, it has celebrated the economic impact of travel and the cultural benefits it brings to our communities. Travel is also good for the mind and soul. According to [Forbes](#), travel can be a stress buster, help reinvent oneself, boost happiness and satisfaction, make you mentally resilient, and enhance creativity. As women, it's easy to get lost in the day-to-day grind, and we may not recognize it until we reach the point of burnout. Take this opportunity to identify time (a day, a few days, a week) for you to set off with family, friends, or even on your own for a well deserved

break. Below are just a few examples of great vacation spots you can find right here in Kansas, including museums and heritage sites dedicated to women. Visit the links provided for a more comprehensive list of vacation spots.



Martin and OSA Johnson Safari Museum

- **Chanute:** The museum features world class exhibits based on the stunning photography and cinematic works of the Johnsons who pioneered the ideology “take only photos, leave only footprints.” The museum holds vast collections of African, Oceanic and Bornean cultural artifacts. Osa is pictured to the left. More information [here](#).

Cherryvale Museum -

Cherryvale: Featuring rooms of artifacts and historical items, china, glassware, and furniture. Special Memorial Tributes to Vivian Vance of "I Love Lucy" fame, and to Louise Brooks, silent film star of the Art Deco era, both of Cherryvale, KS. More information [here](#).

Amelia Earhart Hangar Museum - Atchison: Home of *Muriel*, the last remaining Lockheed Electra 10-E! *Muriel* is identical to the airplane Amelia Earhart went missing in on her famed final flight around the world. This hybrid history and STEM museum tells Earhart’s story and teaches visitors about aviation and aerospace through interactive exhibits. More information [here](#).

Little House on the Prairie Museum - Independence: Replica of Ingall's 1870 cabin at the original site. Discover the pioneer way of life of the Ingalls family at this reconstructed log cabin made famous in the series of children's books written by Laura Ingalls Wilder. More information [here](#).

Find a full list of Kansas museums and historic sites [here](#).

If you need a break from the museums, visit one of Kansas' many [parks and outdoor settings](#) for camping, hiking, and swimming. A few great spots are:

Cedar Bluff State Park: The park boasts two recreation areas encompassing 1,100 acres along the shore of Cedar Bluff Lake. Adventurers will enjoy a stunning view of the lake from the top of the 150-foot-high limestone bluffs. Park-goers can enjoy fishing, boating, hiking, and camping.

Mushroom Rock State Park: Tucked into the Smoky Hills region in the north-central part of the state, the mushroom rocks are natural Dakota rocks, which are the remains of beach sands and sediments of the Cretaceous Period.

Wilson State Park: Set in the scenic Smoky Hills region of Kansas, Wilson State Park provides convenient access to one of the state’s prime water recreation areas, Lake Wilson Marina.



Celebrating Our Achievements



The Office of Information Technology Services (OITS) is excited to welcome Dy Gadberry as its new Director of Human Resources. Dy is no stranger to OITS. She joined the agency as HR Generalist after working in HR for the Kansas Department of Health and Environment. Dy has been instrumental in building a robust HR department and looks forward to supporting the agency in her new role.

Congratulations on your promotion, Dy!

Have you, your colleagues, or your department been nominated for or won an award? Do you want your colleagues to be recognized for their achievements? We want to hear about it! **Please submit awards or achievements to KansasWISE@ks.gov for inclusion.**



Kansas WISE

Career Development Presents

"Speed Networking"

Join the Career Development Subcommittee to network with other state employees from across agencies and different communities.

- **Date:** Thursday, May 18
- **Time:** 1:30pm-2:30pm
- **Location:** Zoom
- **Registration:** Free and open to State of Kansas employees. [Register here.](#)

We understand people are busy and schedules may prevent you from attending Kansas WISE events. Other information and opportunities are forthcoming so stay tuned!



Kansas WISE Happenings



Kansas WISE Mentoring Pilot Program

Mentee Applicants

Mentoring relationships have powerful positive effects on people professionally and personally. Mentees can expand their knowledge and skills, gain valuable advice, and build their professional networks.

The Mentorship Program offers the following types of activities:

- 1:1 mentorship: Traditional model of mentoring where one mentor is paired with one mentee.
- Group mentoring: One mentor meets with a group of mentees (5-7)
- Peer mentoring: Mentorship between employees in an organization to foster knowledge and skills transfer.

- Bring your own mentor: Mentee identifies a mentor and asks them to participate in the program.

Start your mentee journey today by applying [here](#).

Mentee spaces are determined by the number of volunteer mentors.



Events and Resources

Events last one hour unless otherwise stated. Times listed are central time.

United WE: Using 'Agilities' to Advance Your Civic or Career Journey: No matter where you are in life, you have strengths, interests, and skills that bring value to the workforce and civic leadership table. Join United WE for a 30 minute overview of the Agile Work Profiler®, an innovative tool designed by The DeBruce Foundation to help you discover more about yourself. - Virtual - May 18, 12:00pm - More information [here](#).

Central Exchange STEMMy Awards: Do you know a woman in STEMM who deserves to be recognized? Central Exchange will present the 10th Annual STEMMy Awards Gala Luncheon in October where they'll celebrate the accomplishments of women business and civic leaders, students and educators, and entrepreneurs and advocates in the Kansas City region who work together to increase gender diversity and who excel in their STEMM field. Nominations are open now and you can read more about the different categories and how to submit a nominee [here](#).

Central Exchange Emerging Leaders Program: This year-long course brings together women from wide-ranging professions for networking and leadership development. Class of 2024 applications are open with both virtual and in-person opportunities available. In-person opportunities will take place in Kansas City, MO at

UMKC. - **Applications due August 15** and there is a fee to participate. More information [here](#).

Did You Know?

Did you know – the last day to use vacation leave that is over the maximum is Saturday June 10, 2023 (or a preceding work day, such as Friday, if you do not work Saturdays). If you are unable to take the excess vacation leave, your Personnel or Payroll office will ensure up to 40 hours of vacation leave that is over the maximum allowed is converted to sick leave at the end of the fiscal year. If you are unsure if this applies to you, contact your Personnel office for assistance as your maximum accumulation may differ.

State employees can subscribe using their state email address [here](#).

Anyone wishing to subscribe using their personal email address should email KansasWISE@ks.gov with their agency name.

Please email us with any questions and feedback.

This email was sent to kansaswise@ks.gov using govDelivery Communications Cloud on behalf of: Kansas Department of Administration · Curtis State Office Building · 1000 SW Jackson, Suite 500 · Topeka, KS 66612-1300

