

**CERTIFICATE**

State of Kansas  
Special District  
2016

To the Clerk of Gray County, State of Kansas  
We, the undersigned, officers of  
**Montezuma Hospital District**

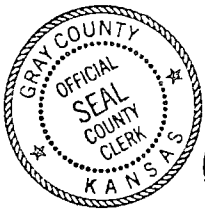
certify that: (1) the hearing mentioned in the attached publication was held;  
(2) after the Budget Hearing this budget was duly approved and adopted  
maximum expenditures for the various funds for the year 2016; and (3) the  
Amount(s) of 2015 Ad Valorem Tax are within statutory limitations for the 2016 Budget.

		2016 Adopted Budget			
Table of Contents:		Page No.	Budget Authority for Expenditures	Amount of 2015 Ad Valorem Tax	County Clerk's Use Only
Computation to Determine Limit for 2016		2			
Allocation MVT, RVT, 16/20M Vehicle Ta		3			
Schedule of Transfers		4			
Statement of Indebt. & Lease/Purchase		5			
<b>Fund</b>	<b>K.S.A.</b>				
General	80-2516	6	396,222	72,676	3.499
<b>Totals</b>		XXXXXXXXXX	396,222	72,676	3.499
Budget Summary		7	Vote publication required?	Yes	County Clerk's Use Only
Neighborhood Revitalization Rebate		8			20,772,742
					Nov. 1, 2015 Total Assessed Valuation

Assisted by:  
Kennedy McKee & Company LLP

Address:  
PO Box 1477  
Dodge City, KS 67801  
Email:  
jkennedy@kmc-cpa.com

*Susan A Williams*  
*Tom Skinner*  
*R/V*



Attest: 10-21, 2015

*Ashley Rogers*  
County Clerk

Governing Body

**Computation to Determine Limit for 2016**

	<b>Amount of Levy</b>
1. Total tax levy amount in 2015 budget	+ \$ <u>66,234</u>
2. Debt service levy in 2015 budget	- \$ <u>0</u>
3. Tax levy excluding debt service	\$ <u>66,234</u>

**2015 Valuation Information for Valuation Adjustments**

4. New improvements for 2015:	+ <u>779,946</u>	
5. Increase in personal property for 2015:		
5a. Personal property 2015	+ <u>563,372</u>	
5b. Personal property 2014	- <u>503,628</u>	
5c. Increase in personal property (5a minus 5b)	+ <u>59,744</u>	
		(Use Only if > 0)
6. Valuation of property that has changed in use during 2015:		<u>72,144</u>
7. Total valuation adjustment (sum of 4, 5c, 6)		<u>911,834</u>
8. Total estimated valuation July, 1,2015	<u>20,762,671</u>	
9. Total valuation less valuation adjustment (8 minus 7)		<u>19,850,837</u>
10. Factor for increase (7 divided by 9)		<u>0.04593</u>
11. Amount of increase (10 times 3)		+ \$ <u>3,042</u>
12. 2016 budget tax levy, excluding debt service, prior to CPI adjustment (3 plus 11)		\$ <u>69,276</u>
13. Debt service levy in this 2016 budget		<u>0</u>
14. 2016 budget tax levy, including debt service, prior to CPI adjustment (12 plus 13)		<u>69,276</u>
15. Consumer Price Index for all urban consumers for calendar year 2014		<u>1.60%</u>
16. Consumer Price Index adjustment (3 times 15)		\$ <u>1,060</u>
17. Maximum levy for budget year 2016, including debt service, not requiring 'notice of vote publication.' (14 plus 16)		\$ <u>70,336</u>

If the 2016 adopted budget includes a total property tax levy exceeding the dollar amount in line 17 you must publish notice of vote by the governing body to adopt such budget in the official county newspaper and attach a copy of the published notice to this budget.

In no event will published notice of the vote be required if the total budget year tax levy is \$1,000 or less.

Montezuma Hospital District  
Gray County

2016

**Allocation of MV, RV, 16/20M, Commercial Vehicle, and Watercraft Tax Estimates**

2015 Budgeted Funds	Tax Levy Amount in 2015 Budget	Allocation for Year 2016				
		MVT	RVT	16/20M Veh	Comm Veh	Watercraft
General	66,234	7,972	93	138	428	0
0	0	0	0	0	0	0
	0	0	0	0	0	0
	0	0	0	0	0	0
<b>Total</b>	<b>66,234</b>	<b>7,972</b>	<b>93</b>	<b>138</b>	<b>428</b>	<b>0</b>

County Treas Motor Vehicle Estimate 7,972

County Treas Recreational Vehicle Estimate 93

County Treas 16/20M Vehicle Estimate 138

County Treas Commercial Vehicle Tax Estimate 428

County Treas Watercraft Tax Estimate 0

MVT Factor 0.12036

RVT Factor 0.00140

16/20M Factor 0.00208

Comm Veh Facto 0.00646

Watercraft Facto: 0.00000

2016

Montezuma Hospital District  
Gray County

Schedule of Transfers

<b>Expenditure Fund Transferred From:</b>	<b>Receipt Fund Transferred To:</b>	<b>Actual Amount for 2014</b>	<b>Current Amount for 2015</b>	<b>Proposed Amount for 2016</b>	<b>Transfers Authorized by Statute</b>
None					
	<b>Totals</b>	0	0	0	
	<b>Adjustments*</b>				
	<b>Adjusted Totals</b>	0	0	0	

\*Note: Adjustments are required only if the transfer is being made in 2015 and/or 2016 from a non-budgeted fund.

Montezuma Hospital District  
Gray County

**STATEMENT OF INDEBTEDNESS**

Type of Debt	Date of Issue	Interest Rate %	Amount Issued	Amount Outstanding Jan 1,2015	Date Due		Amount Due 2015		Amount Due 2016	
					Interest	Principal	Interest	Principal	Interest	Principal
General Obligation:										
None										
Total G.O.				0			0	0	0	0
Revenue Bonds:										
None										
Total Revenue				0			0	0	0	0
Other:										
None										
Total Other				0			0	0	0	0
<b>Total</b>				<b>0</b>			<b>0</b>	<b>0</b>	<b>0</b>	<b>0</b>

**STATEMENT OF CONDITIONAL LEASE-PURCHASE AND CERTIFICATE OF PARTICIPATION\***

Items Purchased	Contract Date	Term of Contract (Months)	Interest Rate %	Total Amount Financed (Beginning Principal)	Principal Balance On Jan 1,2015	Payments Due 2015	Payments Due 2016
None							
<b>Total</b>				<b>0</b>	<b>0</b>	<b>0</b>	<b>0</b>

\*\*\*If you are merely leasing/renting with no intent to purchase, do not list--such transactions are not lease-purchases.



**NOTICE OF BUDGET HEARING**

State of Kansas  
Special District  
2016

The governing body of  
**Montezuma Hospital District**  
**Gray County**

will meet on July 13, 2015 at 6:00 PM at Montezuma Clinic, Montezuma, Kansas for the purpose of hearing and answering objections of taxpayers relating to the proposed use of all funds and the amount of tax to be levied. Detailed budget information is available at Montezuma Clinic, Montezuma, Kansas and will be available at this hearing.

**BUDGET SUMMARY**

Proposed Budget 2016 Expenditures and Amount of 2015 Ad Valorem Tax establish the maximum limits of the 2016 budget. Estimated Tax Rate is subject to change depending on the final assessed valuation.

FUND	Prior Year Actual 2014		Current Year Estimate for 2015		Proposed Budget Year for 2016		
	Expenditures	Actual Tax Rate*	Expenditures	Actual Tax Rate*	Budget Authority for Expenditures	Amount of 2015 Ad Valorem Tax	Estimate Tax Rate*
General	63,311	3.497	100,000	3.499	396,222	72,676	3.500
<b>Totals</b>	<b>63,311</b>	<b>3.497</b>	<b>100,000</b>	<b>3.499</b>	<b>396,222</b>	<b>72,676</b>	<b>3.500</b>
Less: Transfers	0		0		0		
<b>Net Expenditures</b>	<b>63,311</b>		<b>100,000</b>		<b>396,222</b>		
Total Tax Levied	60,730		66,234		xxxxxxxxxxxxxxxx		
Assessed Valuation	17,365,324		18,928,694		20,762,671		

Outstanding Indebtedness,

Jan 1,	<u>2013</u>	<u>2014</u>	<u>2015</u>
G.O. Bonds	0	0	0
Revenue Bonds	0	0	0
Other	0	0	0
Lease Pur. Princ.	0	0	0
Total	0	0	0

\*Tax rates are expressed in mills.

Marsha Koehn  
Clerk

**2016 Neighborhood Revitalization Rebate**

Budgeted Funds for 2016	2015 Ad Valorem before Rebate**	2015 Mil Rate before Rebate	Estimate 2016 NR Rebate
General	72,454	3.490	222
0			
<b>TOTAL</b>	<b>72,454</b>	<b>3.490</b>	<b>222</b>

2015 July 1 Valuation: 20,762,671

Valuation Factor: 20,762.671

Neighborhood Revitalization Subj to Rebate: 63,527

Neighborhood Revitalization factor: 63.527

\*\*This information comes from the 2016 Budget Summary page. See instructions tab #12 for completing the Neighborhood Revitalization Rebate table.



# Proof of Publication

STATE OF KANSAS, GRAY COUNTY, ss:

Rudy Joewen

being first duly sworn, deposes and says: that

he is publisher

of THE MONTEZUMA PRESS, a weekly newspaper printed in the State of Kansas, and published in and of general circulation in Gray County, Kansas with a general paid circulation on a yearly basis in Gray County, Kansas, and that said newspaper is not a trade, religious or fraternal publication.

Said newspaper is a weekly published at least weekly 50 times a year; has been so published continuously more than five years prior to the first publication of said notice; and has been admitted at the post office of Montezuma in said County as second class matter.

That the attached notice is a true copy thereof and was published in the regular and entire issue of said newspaper for 1 consecutive weeks, the first publication thereof being made as aforesaid on the

2nd day of July  
20 15,

with subsequent publications being made on the following date:

\_\_\_\_\_, 20\_\_\_\_  
\_\_\_\_\_, 20\_\_\_\_  
\_\_\_\_\_, 20\_\_\_\_

Subscribed and sworn to before me this 2 day

of July 2016.

Carol Overstreet  
Notary Public

My commission expires: 3/30/16

Printer's fee \$ 78.20

Additional copies \$ \_\_\_\_\_

Published in The Montezuma Times

will meet on July 13, 2016, answering objections

Detailed budget information

Proposed Budget 2016 of the 2016 budget.

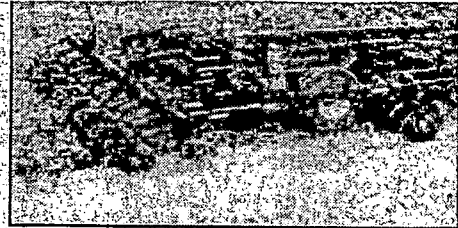
FUND	Prior Year Expenditures
General	63,366
Totals	63,366
Less: Transfers	
Net Expenditures	63,366
Total Tax Levied	63,366
Assessed Valuation	17,366,000

Outstanding indebtedness, Jan. 1, 2013

G.O. Bonds	0
Revenue Bonds	0
Other	0
Lease Pur. Princ.	0
Total	0

\*Tax rates are expressed in mill

Marsha Koehn  
Clerk



Let us break up the hard after harvest!

375 HP 4-Wheel Drive Tractor w/GPS  
DMI Disc Ripper  
NH3 Application with Raven Control  
Shop (620) 855-3774 or Keith (620) 855-3774

## ENSZ BROTHERS

General Truck Repair  
Engine Overhauls  
Drive Train Repairs  
Frame Stretching & Modifications  
Double Frames  
Suspension and Brake Repairs  
Bed, Hoist & PTO Installations  
A/C Service & Repair  
Annual Inspections

Shop (620) 855-3774 Fax 855-3774



# Proof of Publication

Published in The Montezuma Thursday, July 2, 2015

## NOTICE OF BUDGET HEARING

The governing body of  
**Montezuma Hospital District**  
 Gray County

will meet on July 13, 2015 at 6:00 PM at Montezuma Clinic, Montezuma, Kansas for the purpose of hearing and answering objections of taxpayers relating to the proposed use of all funds and the amount of tax to levied. Detailed budget information is available at Montezuma Clinic, Montezuma, Kansas and will be available at this hearing.

### BUDGET SUMMARY

Proposed Budget 2016 Expenditures and Amount of 2015 Ad Valorem Tax establish the maximum limits of the 2016 budget. Estimated Tax Rate is subject to change depending on the final assessed valuation.

FUND	Prior Year Actual 2014		Current Year Estimate for 2015		Proposed Budget Year for 2016		
	Expenditures	Actual Tax Rate*	Expenditures	Actual Tax Rate*	Budget Authority for Expenditures	Amount of 2015 Ad Valorem Tax	Estimate Tax Rate*
General	63,311	3.497	100,000	3.499	396,222	72,676	3.500
Totals	63,311	3.497	100,000	3.499	396,222	72,676	3.500
Less: Transfers	0		0		0		
Net Expenditures	63,311		100,000		396,222		
Total Tax Levied	60,730		66,234		XXXXXXXXXXXXXXX		
Assessed Valuation	17,365,324		18,928,694		20,762,671		

#### Outstanding Indebtedness

Jan 1	2013	2014	2015
G.O. Bonds	0	0	0
Revenue Bonds	0	0	0
Other	0	0	0
Lease Pur. Princ.	0	0	0
Total	0	0	0

\*Tax rates are expressed in mills.

Marsha Koehn  
 Clerk

**CAROL OVERSTREET**  
 NOTARY PUBLIC - State of Kansas  
 My Appt. Expires

hundred yards, more will migrate in. Keep weeds down in empty cattle pens, alleys, vacant lots and ditches and grasshopper problems are manageable.

## Gray County Recreation youth volleyball camp

The Gray County Recreation Center is holding a youth volleyball camp August 3-5 for girls going into the 3<sup>rd</sup> through the 6th grades.

Third and fourth graders will meet from 9:00 to

10:00 AM, fifth and sixth graders will meet from 10:00 to 11:30 A.M. Ellen Henry will be the camp clinician.

Contact Dale Voth at 855-3314 for information and registration.

Prepare Ye The Way Ministry will be holding a one night evangelistic meeting at the Senior Citizen building in Montezuma on July 25th at 7:00pm.

We are living in critical days are you prepared spiritually?

What if we are the last generation?

God is calling out His remnant, are you one of these?

For more information call Brad Foster: 1-620-655-7885 or Ron Novinger: 1-620-253-2571

for 2015-16.

Following executive session, DeLoy Dahlke made a motion to approve district teaching assignments as follows:  
 Pre-K - Abby Lang,  
 KDG - Angie Kisner,  
 1<sup>st</sup> - Mariana McLaurin,  
 2<sup>nd</sup>/3<sup>rd</sup> - Tabitha Ferrell,  
 4<sup>th</sup>/5<sup>th</sup> - Amy Hollingsworth, JH Science - Scott Whitesides, JH Math - Pam Watkins, JH Social Studies - Ryan Young, JH Reading - Cynthia Paxson, JH English - Kelly Clark and Vern Kisner, Librarian - Wendy Koehn, Counselor - Ashlin Davidson, Special Education -

(Published in The Montezuma Press July 23, 2015.)

### Notice of Vote - Montezuma Hospital District

Pursuant to K.S.A. 79-2925b, as amended by 2014 House Bill 2047-

	Total Property Tax Levied
2015 Budget	\$ 66,234
2016 Budget	\$ 72,676
Approved (vote) <u>3</u> to <u>0</u>	

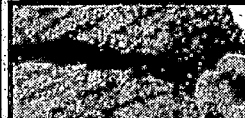
The mill levy will remain approximately the same.

Now of Wood Th



Delbert delbertk@ Custo  
 • cedar c  
 • bedroo  
 • china c  
 • cheval

# ON SALE



**NEW YORK STRIP STEAK**  
 select bone in single pack