

CERTIFICATE

To the Clerk of Barton County, State of Kansas
 We, the undersigned officers of

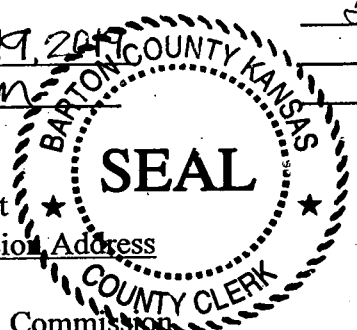
Great Bend Recreation Commission

certify that the hearing mentioned in the attached publication was held and after the budget hearing this budget was duly approved and adopted as the maximum expenditure for the various funds for the year. Per K.S.A. 12-1927 a copy of the budget has been submitted to the sponsoring entity and to county clerk.

Table of Contents for the Adopted Budget:	Page No.	2019/2020 Adopted Budget of Expenditures for the Proposed Budget Year
Statement of Cond. Lease- Purchase/Cert. of	2	
General	3	3,449,234
Employee Benefit/Insurance Fu	4	455,345
TOTAL		3,904,579
Budget Summary	0	

Jan P. ...
Andrew Bauer
July 2, 2019

Date Received: July 19, 2019
D. ...
 County Clerk



Commission Members

Permanent
 Recreation Commission Address
 Great Bend Recreation Commission
 P.O. Box 353
 Great Bend, Ks 67530

Sponsoring
 USD/City Address
 USD 428
 Patton Road
 Great Bend, Ks 67530

Provide point of contact:
 0
 POC phone number:
 (620)793-3755

Other County: Stafford County
 Other County: 0
 Other County: 0
 Other County: 0
 Other County: 0

CPA Summary

Statement of Conditional Lease-Purchase and Certificate of Participation

Items Purchased	Contract Date	Term of Contract (Months)	Int Rate %	Ending Date of Contract	Total Amount Financed (Beg Princ)	Princ Bal On @ Beg of FY: 2018/2019	Pmts Due for the Year of 2018/2019	Pmts Due for the Year of 2019/2020
None								
Total						0	0	0

***If you are merely leasing/renting with no intent to purchase, do not list--such transactions are not lease-purchases.

Great Bend Recreation Commission

FUND PAGE

Adopted Budget

Employee Benefit/Insurance Fund	Prior Year Actual 2017/2018	Current Year Estimated 2018/2019	Proposed Budget Year 2019/2020
Unencumbered Cash Balance	134,010	140,623	172,060
Receipts:			
Appropriation from USD 428	244,462	278,101	283,285
General Fund Transfer			
Miscellaneous			
Does misc. exceeds 10%			
Interest on Idle Funds			
Total Receipts	244,462	278,101	283,285
Resources Available	378,472	418,724	455,345
Expenditures:			
Social Security/Medicare	51,750	42,681	58,000
KPERS	49,314	51,390	53,000
Unemployment Insurance	676	685	750
Employee Insurances	113,615	131,359	313,595
Liability Insurance	15,620	11,113	20,000
Workers Compensation	6,874	9,436	10,000
Miscellaneous			
Does misc. exceeds 10%			
Total Expenditures	237,849	246,664	455,345
Unencumbered Cash Balance	140,623	172,060	0

CPA Summary

BARTON COUNTY

Proof of Publication

SS.

MARY HOISINGTON

of lawful age, duly sworn upon oath states that SHE

is the PUBLISHER

of THE GREAT BEND TRIBUNE

THAT said newspaper has been published at least weekly fifty (50) times a year and has been so published for at least five years prior to the first publication of the attached notice:

THAT said paper was entered as second class mail matter at the post office of its publication:

THAT said paper has a general paid circulation on a daily, or weekly, or monthly, or yearly basis in

BARTON County, Kansas, and is

NOT a trade, religious or fraternal publication and has been PRINTED and published in BARTON County, Kansas.

That the attached notice was published in a regular issue of said newspaper for 1 consecutive weeks, the first publication being on the 26th day of June 2019 and the last publication on the 26th day of June 2019

Publication Fee \$

Affidavit, Notary's Fees \$

Additional Copies at \$

Total Publication Fee \$ 28.01

(Sign) Witness my hand this 26th day of June 2019

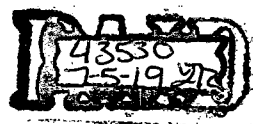
SUBSCRIBED and Sworn to before me this 26th day of June, 2019

Loretta Russell (Notary Public)

State of Kansas - Notary Public Loretta Russell My Commission Expires 9-8-22

Published in the Great Bend Tribune, June 26, 2019 -11 The governing body of GREAT BEND RECREATION COMMISSION will meet on July 8, 2019 at 4:00 P.M., at 1214 Stone Street for the purpose of hearing and answering objections of taxpayers relating to the proposed use of all funds. Detailed budget information is available at Great Bend Recreation Commission and will be available at this meeting. SUPPORTING COUNTIES Barton County (home county) Stafford County BUDGET SUMMARY OF EXPENDITURES The proposed budget year expenditure amount is the maximum expenditure limit for the proposed budget year.

Table with 3 columns: FUND, Prior Actual Year 2017-2018, Current Year Estimated 2018-2019, PROPOSED BUDGET YEAR 2019-2020. Rows include General, Employee Benefit/Insurance Fund, Totals, and Lease Purchases for 2016, 2017, and 2018.



BARTON COUNTY

Proof of Publication

SS.

MARY HOISINGTON

of lawful age, duly sworn upon oath states that SHE

is the PUBLISHER

of THE GREAT BEND TRIBUNE

THAT said newspaper has been published at least weekly fifty (50) times a year and has been so published for at least five years prior to the first publication of the attached notice:

THAT said paper was entered as second class mail matter at the post office of its publication:

THAT said paper has a general paid circulation on a daily, or weekly, or monthly, or yearly basis in

BARTON County, Kansas, and is

NOT a trade, religious or fraternal publication and has been PRINTED and published in BARTON County, Kansas.

That the attached notice was published in a regular issue of said newspaper for 2 consecutive weeks, the first publication being on the 23rd day of August 20 13 and the last publication on the 30th day of August 20 13

Publication Fee	\$	_____
Affidavit, Notary's Fees	\$	_____
Additional Copies _____ at _____	\$	_____
Total Publication Fee	\$	<u>79.68</u>

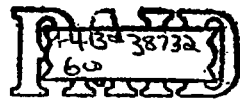
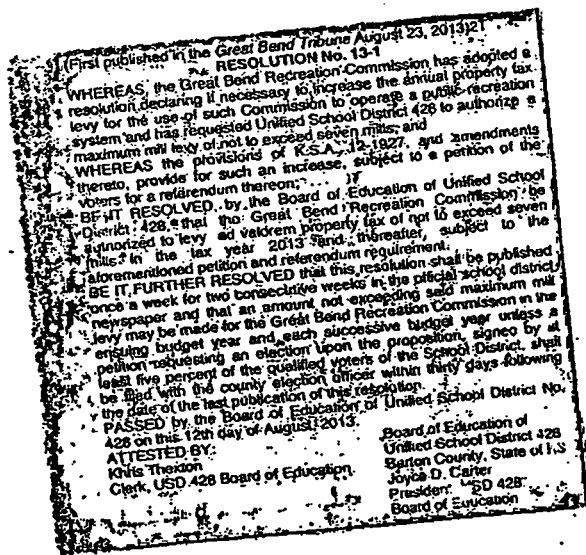
(Sign) Mary Hoisington
Witness my hand this 30th day of August 20 13

SUBSCRIBED and Sworn to before me this 30th day of August 20 13

Raegina Werth
(Notary Public)

State of Kansas - Notary Public
RAEGINA WERTH
My Commission Expires 7-26-14

My commission expires _____



UNIFIED SCHOOL DISTRICT 428
201 South Patton Road, Great Bend, KS 67530-4613

RESOLUTION NO. 13-1

WHEREAS, the Great Bend Recreation Commission has adopted a resolution declaring it necessary to increase the annual property tax levy for the use of such Commission to operate a public recreation system and has requested Unified School District 428 to authorize a maximum mill levy of not to exceed seven mills; and

WHEREAS the provisions of K.S.A. 12-1927, and amendments thereto, provide for such an increase, subject to a petition of the voters for a referendum thereon;

BE IT RESOLVED, by the Board of Education of Unified School District 428, that the Great Bend Recreation Commission be authorized to levy ad valorem property tax of not to exceed seven mills in the tax year 2013 and thereafter, subject to the aforementioned petition and referendum requirement.

BE IT FURTHER RESOLVED that this resolution shall be published once each week for two consecutive weeks in the official school district newspaper and that an amount not exceeding said maximum mill levy may be made for the Great Bend Recreation Commission in the ensuing budget year and each successive budget year unless a petition requesting an election upon the proposition, signed by at least five percent of the qualified voters of the School District, shall be filed with the county election officer within thirty days following the date of the last publication of this resolution.

PASSED by the Board of Education of Unified School District No. 428 on this 12th day of August, 2013.

ATTESTED BY:

BOARD OF EDUCATION OF
UNIFIED SCHOOL DISTRICT 428
BARTON COUNTY, STATE OF KANSAS



Clerk, USD 428 Board of Education



President, USD 428 Board of Education

RESOLUTION NO. 7122013

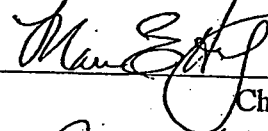
WHEREAS, the Great Recreation Commission has been operating a public recreation system under the provisions of Article 19 of Chapter 12 of the Kansas Statutes Annotated, and the Unified School District No.#428 is currently authorized to levy a property tax of not to exceed five (5) mills for the use of the Recreation Commission; and

WHEREAS, the Great Bend Recreation Commission has determined that the maximum authorized property tax currently being levied for the use of the Commission is insufficient to operate the recreation system, and the Commission determines that increasing the annual levy is necessary;

BE IT RESOLVED, by the Great Bend Recreation Commission that the Commission hereby requests that the maximum annual mill levy be increased to seven (7) mills, and that the Commission requests the Unified School District No.428 to authorize such an increase in accordance with K.S.A. 12-1927, and amendments thereto.

PASSED, by the Great Recreation Commission on this 12th day of July, 2013.

Commission Members



Chairperson



Secretary

RESOLUTION NO. 7082019

WHEREAS, the Great Bend Recreation Commission has been operating a public recreation system under the provisions of Article 19 of Chapter 12 of the Kansas Statutes Annotated, and the Unified School District No. 428 is currently authorized to levy a property tax of one and one half mill (1.50) for the use of the Recreation Commission's Employee Benefit/Insurance Contribution Fund for the purpose of paying the employers share of any employee benefits as may be prescribed in the resolution as prescribed by K.S.A.12-1928.

WHEREAS, the Great Bend Recreation Commission has determined that the authorized property tax of one mill and one half of a mill (1.50) currently being levied for the use of the Commission is sufficient to operate the employee benefit contribution fund, and the Commission determines that the annual levy shall remain in effect for each consecutive year.

BE IT RESOLVED, by the Great Bend Recreation Commission that the Commission hereby request that the annual mill levy of one and one-half mills (1.5), is sufficient and requests the Unified School District No. 428 to authorize such levy in accordance with K.S.A. 12-1928 and amendments thereto.

Recreation Commission:

Pollie Unruh

Chairperson

Ta O Unruh

Secretary

June 24, 2019

Date